

Loughrea Cast Iron, Co. Galway TM - Overview

- Farrans have been contracted by Irish Water to carry out mains rehabilitation throughout the North and North West Regions of Ireland. One of the areas highlighted for mains rehabilitation is in Loughrea.
- The scheme covers 3 different District Metering Area's (DMA's)
 1. Loughrea Cast Iron
 2. Moore Street
 3. Kings Street
- In order to complete the necessary mains replacement works for Loughrea we must close the road on;
 - Moore Street
 - Piggott Street
 - Church Street
 - Kings Street
 - Kellys Street
 - Castle Street

These will be closed individually. Access to Business Owners, Residents and Emergency Services will be maintained throughout.

- Slide 2-4 Shows an overall layout of the Scheme
- The connections on Barrack Street and Main Street will be control using 3-Way Traffic Lights or Stop/Go as per Slide 5.
- Slide 6-12 shows all the Road Closures and Diversion Routes.
- Slides 13 shows the Typical TM arrangements which will be used during the works
- The following plans show the areas where works will be taking place and where the Traffic management systems will be used.
- All traffic management signage will be accordance with Chapter 8. Signs such as 'Men at Work' and advance warning distance markers are not shown on these plans for clarity but will be in place during the works.

NOTES

1. All signs will comply with Traffic Sign Regulations.
2. All Traffic Management to be in accordance with Chapter 8.

FARRANS

UTILITIES

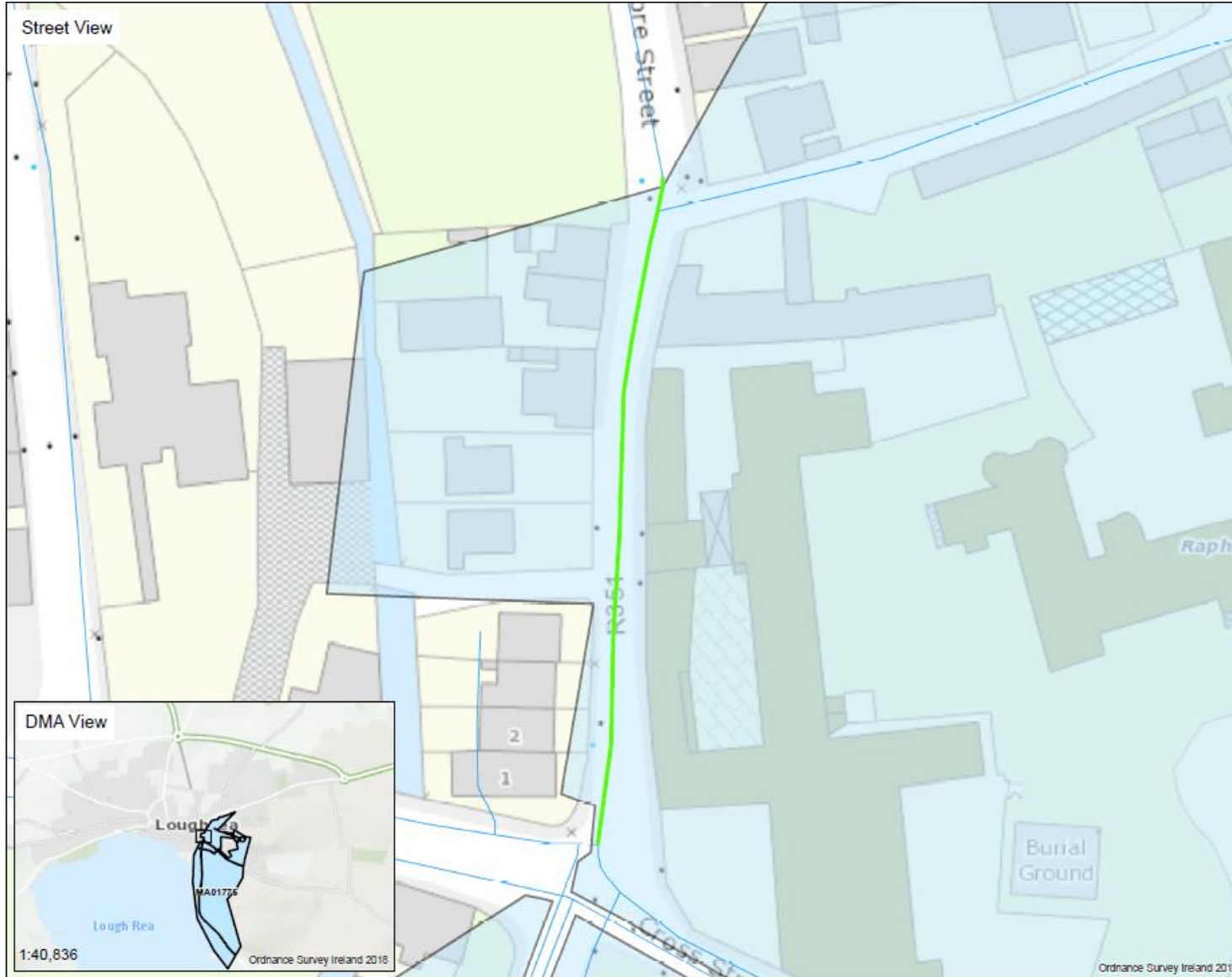
Farrans Construction Ltd
99 Kingsway,
Dunmurry,
BT17 9NU.

Project:

Irish Water Network
Management

**Loughrea Cast Iron
Batch 1, Co. Galway**

Moore Street, Scheme Layout



NOTES

1. All signs will comply with Traffic Sign Regulations.
2. All Traffic Management to be in accordance with Chapter 8.

FARRANS

UTILITIES

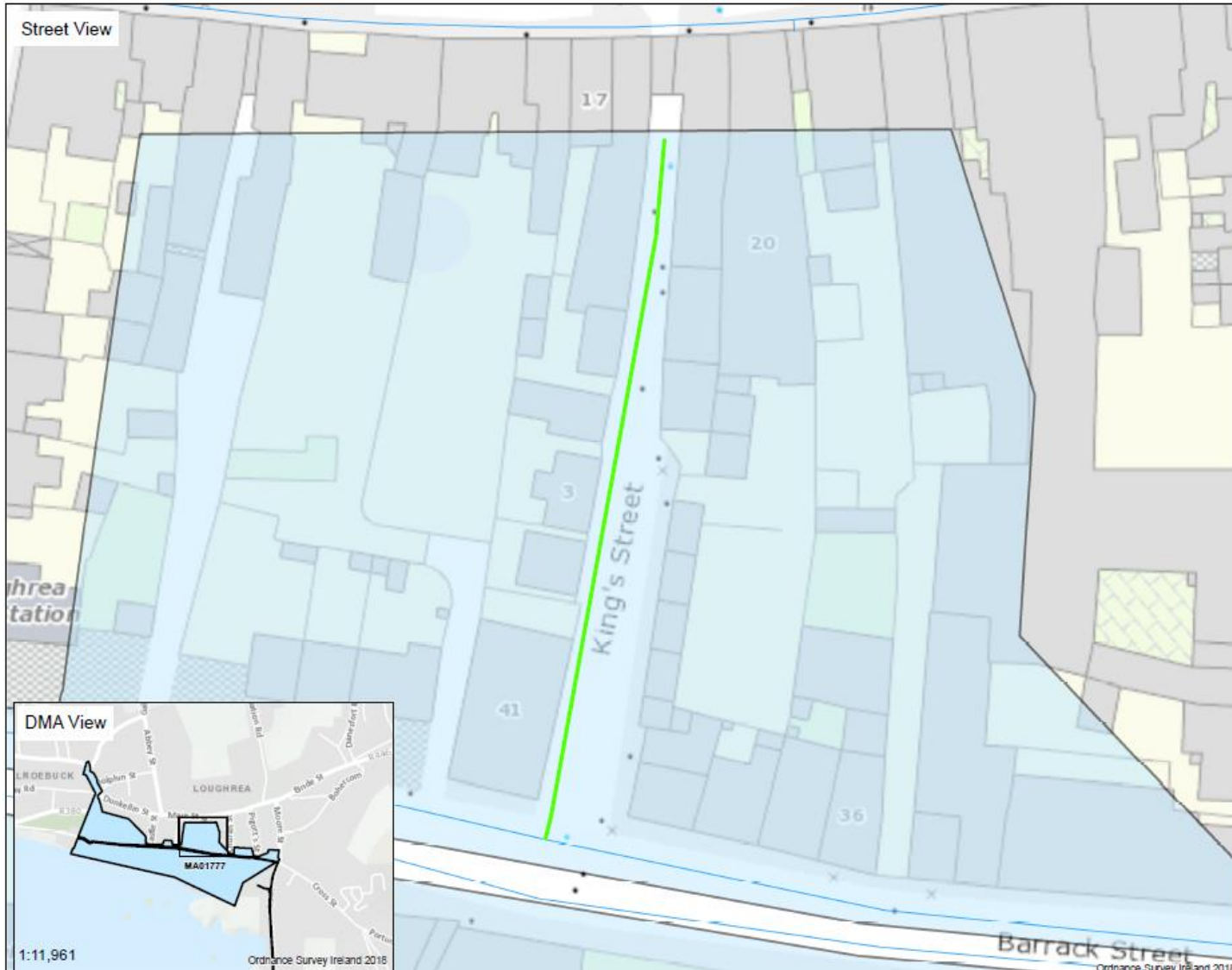
Farrans Construction Ltd
99 Kingsway,
Dunmurry,
BT17 9NU.

Project:

Irish Water Network
Management
Loughrea Cast Iron
Batch 1, Co. Galway

Works Area for Mains Rehabilitation.

King's Street, Scheme Layout



NOTES

1. All signs will comply with Traffic Sign Regulations.
2. All Traffic Management to be in accordance with Chapter 8.

FARRANS

UTILITIES

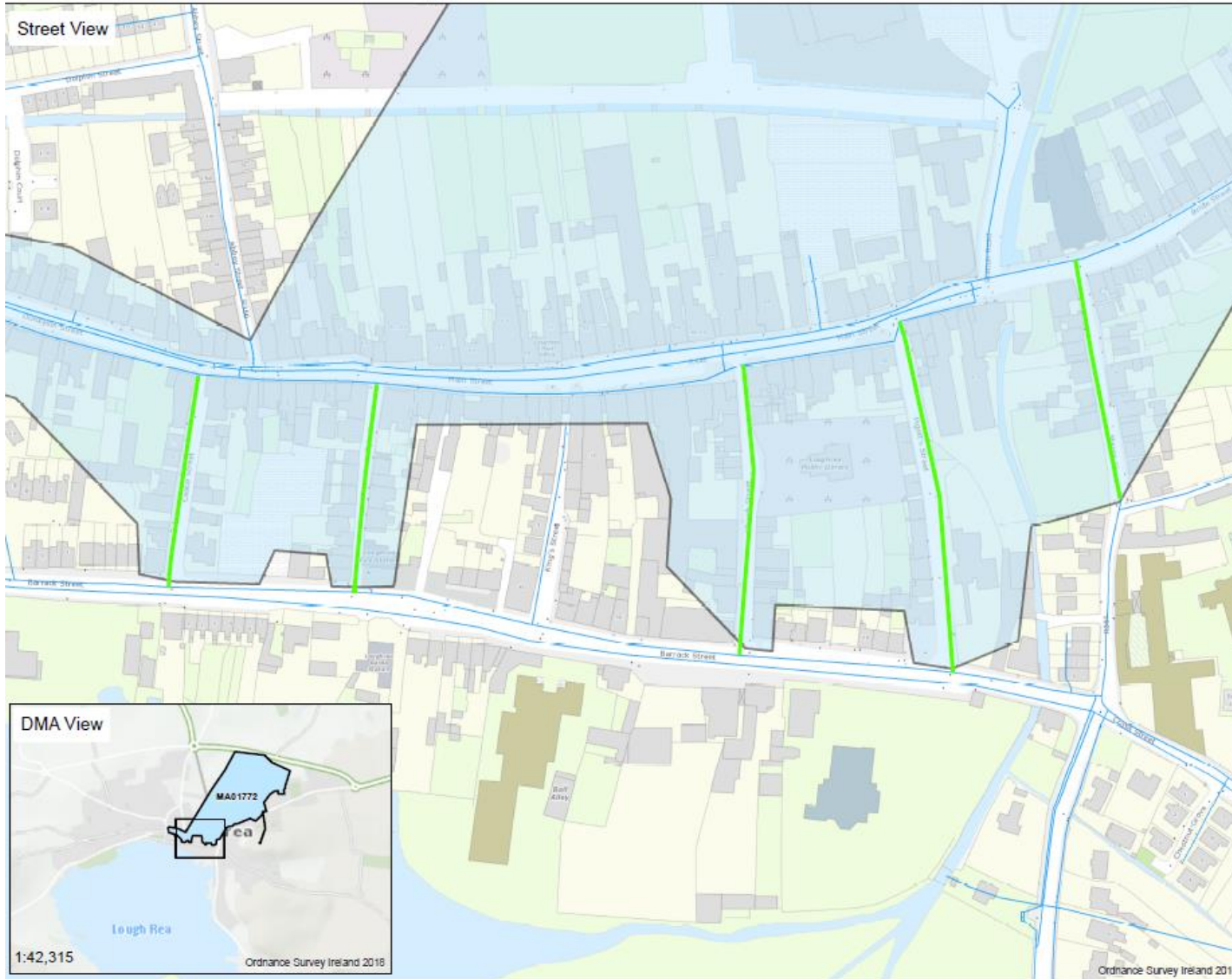
Farrans Construction Ltd
99 Kingsway,
Dunmurry,
BT17 9NU.

Project:

Irish Water Network
Management
Loughrea Cast Iron
Batch 1, Co. Galway

Works Area for Mains Rehabilitation.

Loughrea Cast Iron, Scheme Layout



NOTES

1. All signs will comply with Traffic Sign Regulations.
2. All Traffic Management to be in accordance with Chapter 8.

FARRANS

UTILITIES

Farrans Construction Ltd
99 Kingsway,
Dunmurry,
BT17 9NU.

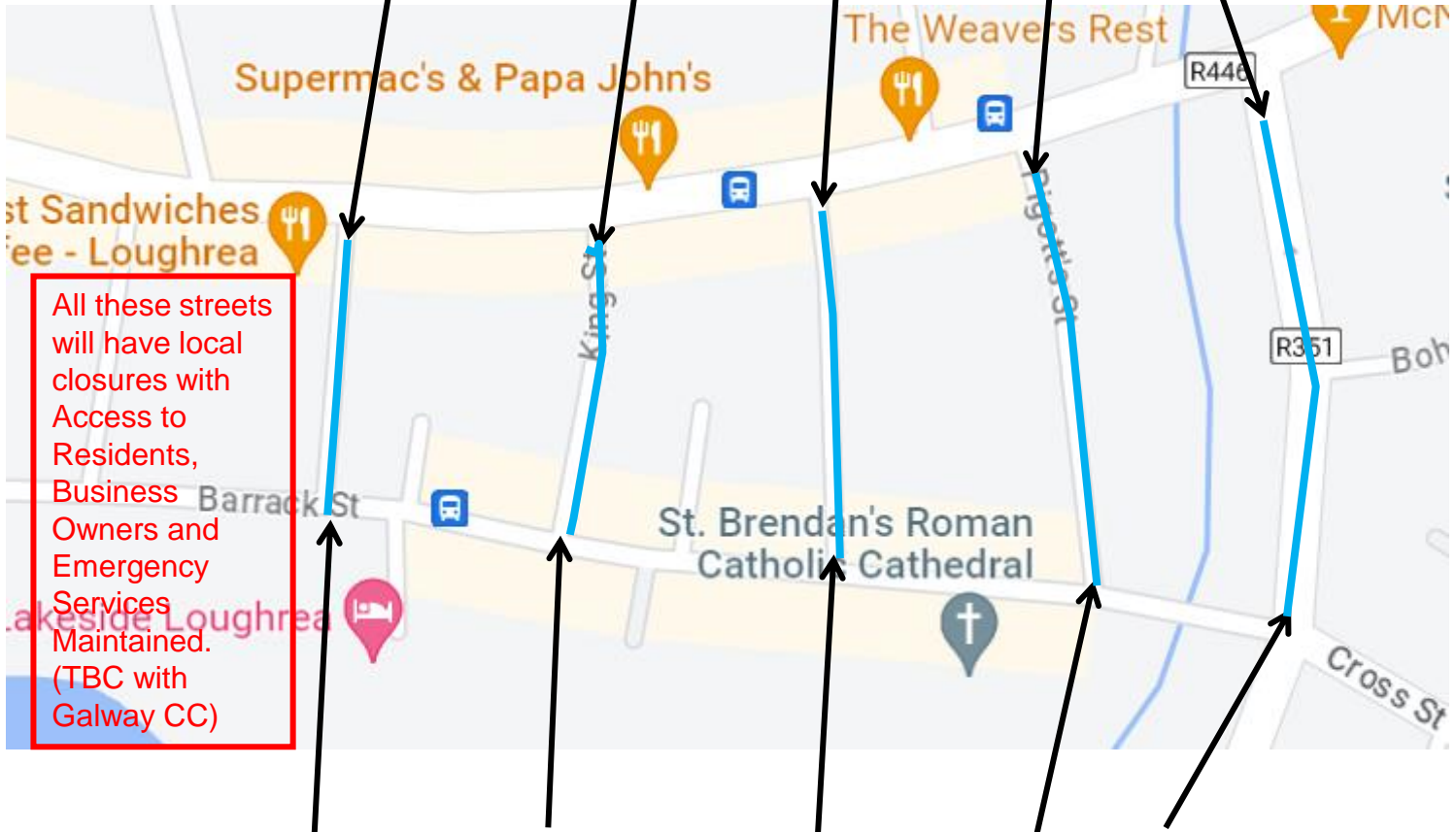
Project:

Irish Water Network
Management
Loughrea Cast Iron
Batch 1, Co. Galway

Works Area for Mains Rehabilitation.

Loughrea Cast Iron, TM Layout

3-Way Traffic Lights or Stop/Go required for connections to existing Main



All these streets will have local closures with Access to Residents, Business Owners and Emergency Services Maintained. (TBC with Galway CC)

3-Way Traffic Lights or Stop/Go required for connections to existing Main

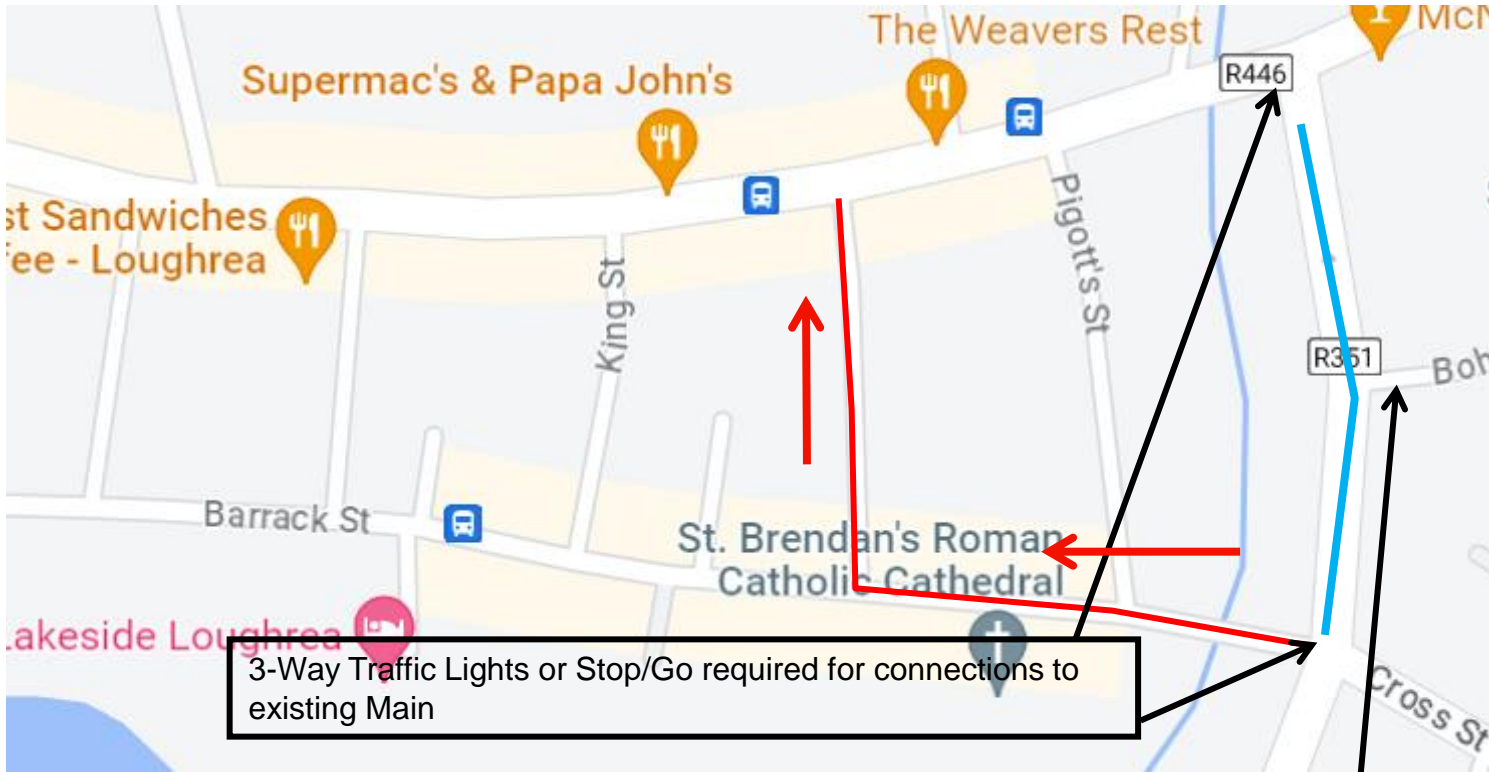
- NOTES**
1. All signs will comply with Traffic Sign Regulations.
 2. All Traffic Management to be in accordance with Chapter 8.

FARRANS
 UTILITIES
 Farrans Construction Ltd
 99 Kingsway,
 Dunmurry,
 BT17 9NU.

Project:
 Irish Water Network Management
Loughrea Cast Iron Batch 1 Co. Galway

Moore Street Closure and Diversion

Road Closure on Moore Street for access to Main Street Traffic will travel along Barrack Street and up Church Street. The Road will be closed at Both Junctions and Access will be available for Locals and Residents



3-Way Traffic Lights or Stop/Go required for connections to existing Main

Traffic from Bohercon will have local access to Main Street from either Moore Street when the works are south of the Junction or down Moore street to the Cross Street Roundabout where they can travel up Church Street.

- NOTES**
1. All signs will comply with Traffic Sign Regulations.
 2. All Traffic Management to be in accordance with Chapter 8.

FARRANS

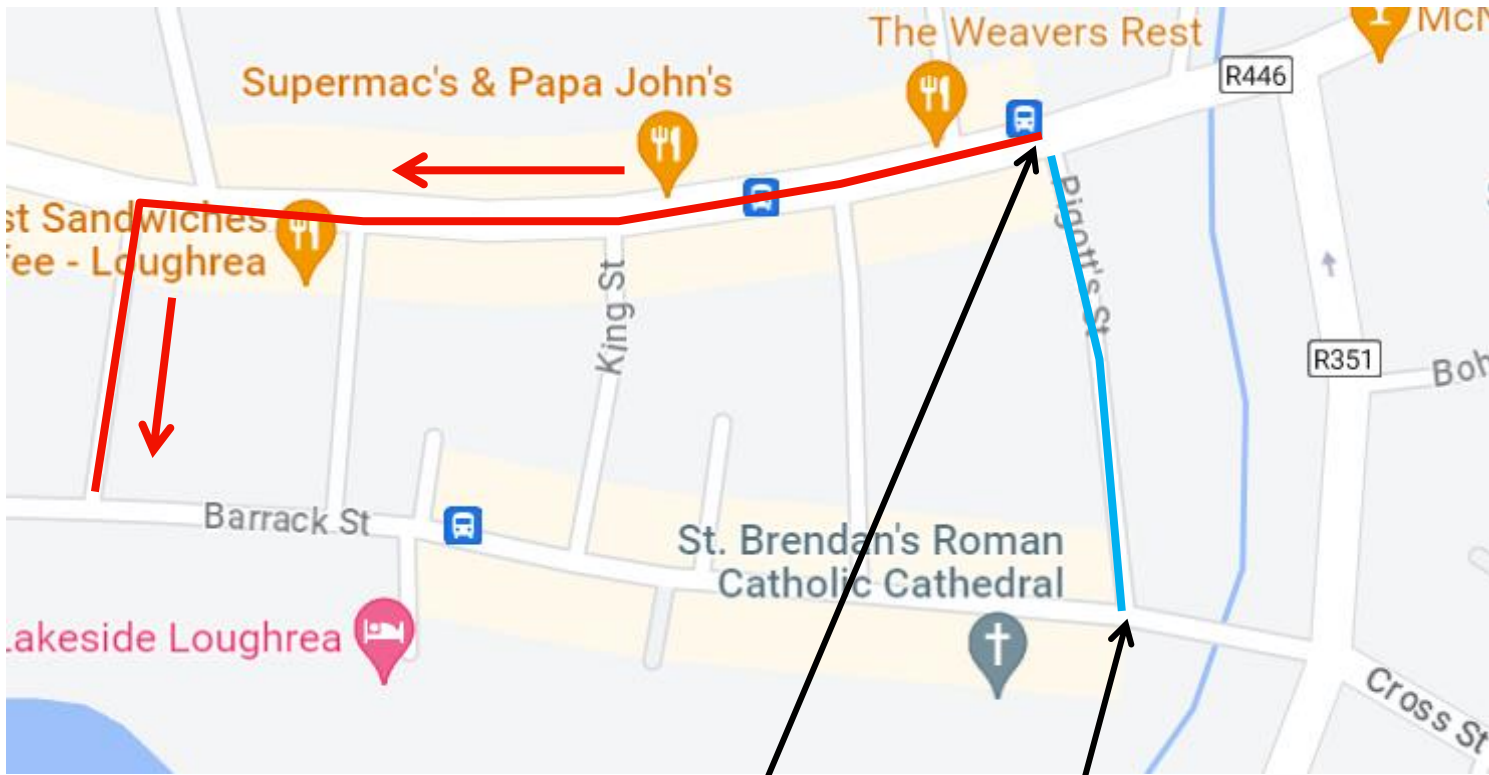
UTILITIES

Farrans Construction Ltd
99 Kingsway,
Dunmurry,
BT17 9NU.

Project:
Irish Water Network
Management
**Loughrea Cast Iron
Batch 1 Co. Galway**

Piggott's Street Closure and Diversion

Road Closure on Piggott's Street for access to Barrack Street Traffic will travel along Main Street and down Castle Street. The Road will be closed at Both Junctions and Access will be available for Locals and Residents



3-Way Traffic Lights or Stop/Go required for connections to existing Main

NOTES

1. All signs will comply with Traffic Sign Regulations.
2. All Traffic Management to be in accordance with Chapter 8.

FARRANS

UTILITIES

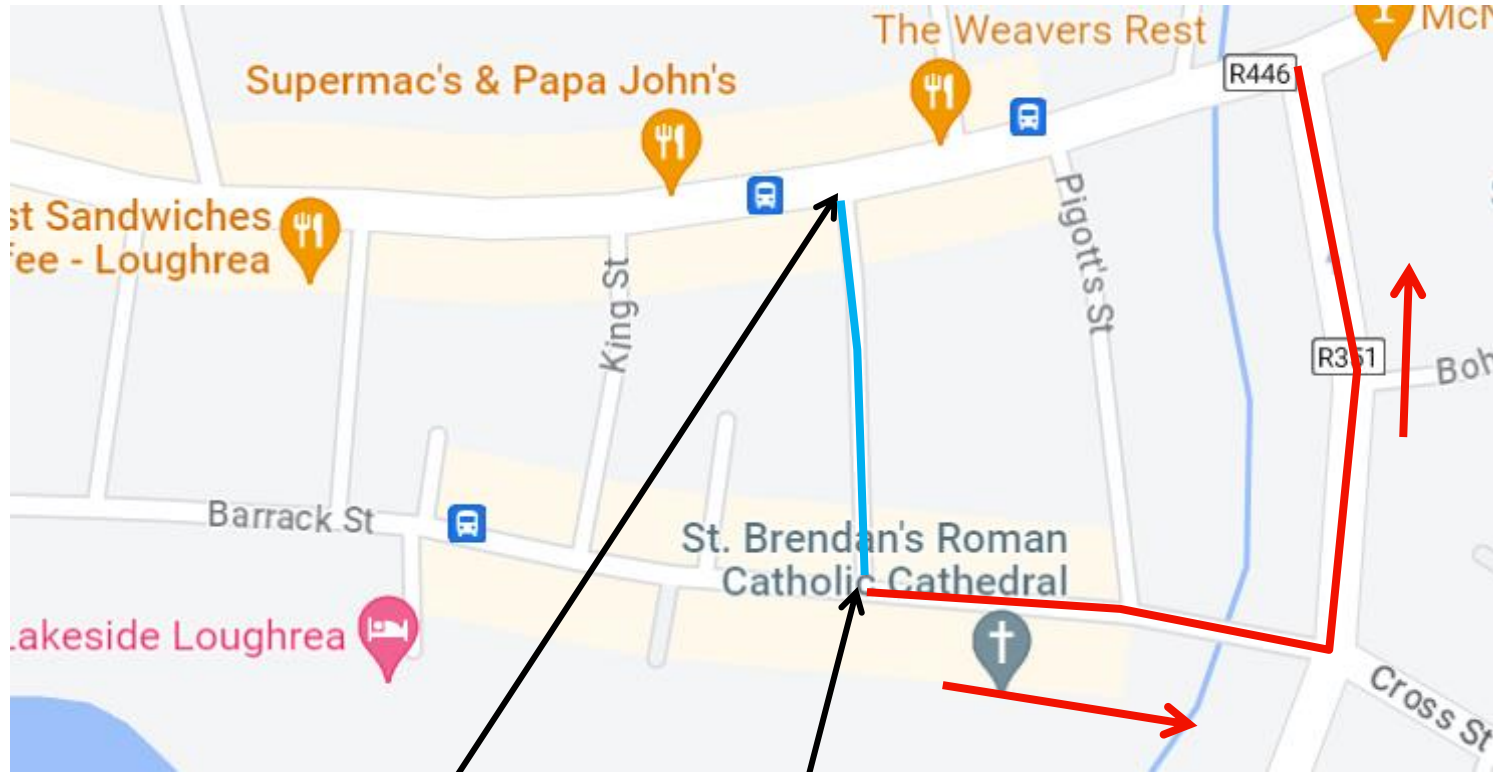
Farrans Construction Ltd
99 Kingsway,
Dunmurry,
BT17 9NU.

Project:

Irish Water Network
Management
**Loughrea Cast Iron
Batch 1 Co. Galway**

Church Street Closure and Diversion

Road Closure on Church Street for access to Main Street Traffic will travel along Barrack Street and up Moore Street. The Road will be closed at Both Junctions and Access will be available for Locals and Residents



3-Way Traffic Lights or Stop/Go required for connections to existing Main

NOTES

1. All signs will comply with Traffic Sign Regulations.
2. All Traffic Management to be in accordance with Chapter 8.

FARRANS

UTILITIES

Farrans Construction Ltd
99 Kingsway,
Dunmurry,
BT17 9NU.

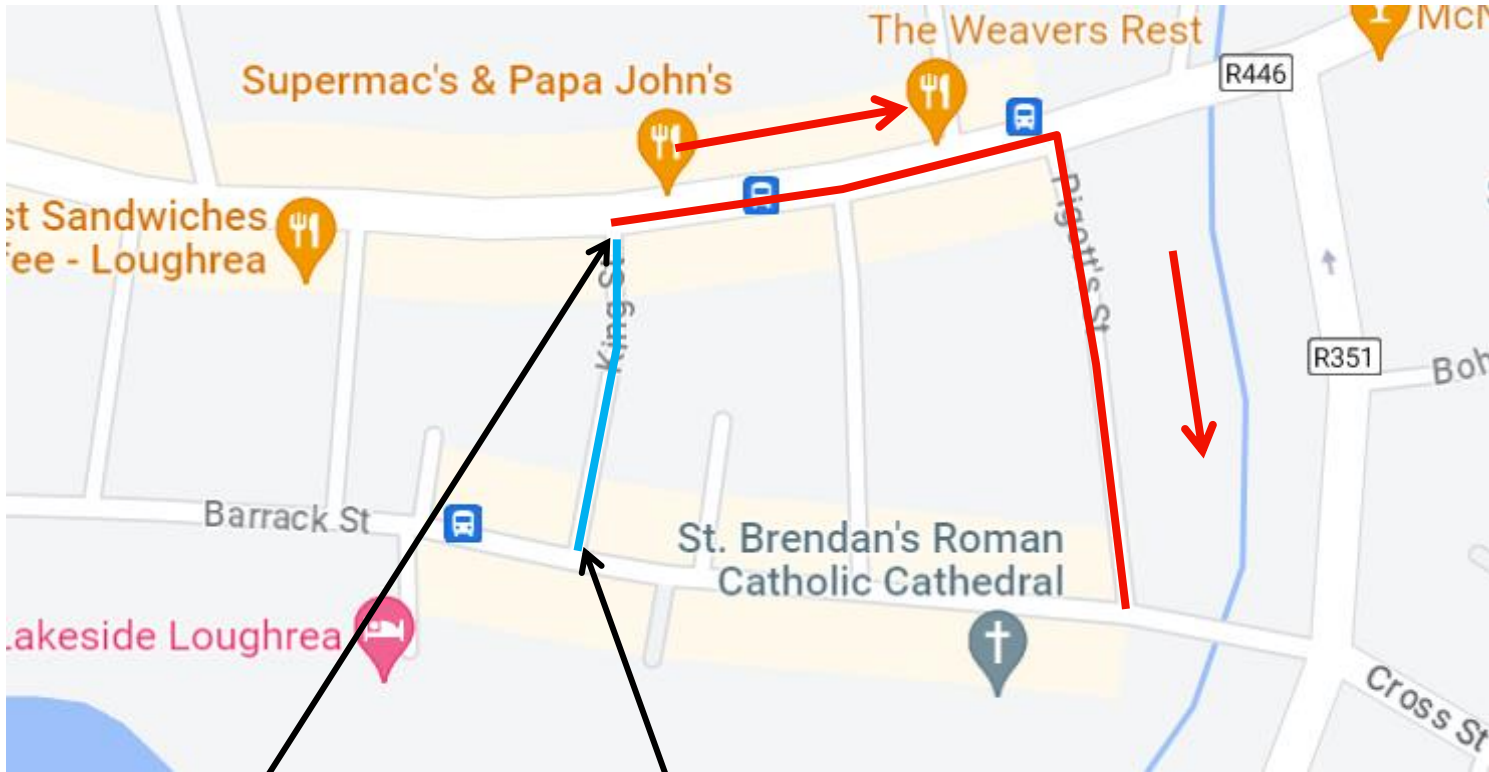
Project:

Irish Water Network
Management

Loughrea Cast Iron
Batch 1 Co. Galway

Kings Street Street Closure and Diversion

Road Closure on King's Street for access to Barrack Street Traffic will travel along Main Street and down Piggott's Street Street. The Road will be closed at Both Junctions and Access will be available for Locals and Residents



3-Way Traffic Lights or Stop/Go required for connections to existing Main

- NOTES**
1. All signs will comply with Traffic Sign Regulations.
 2. All Traffic Management to be in accordance with Chapter 8.

FARRANS
UTILITIES
Farrans Construction Ltd
99 Kingsway,
Dunmurry,
BT17 9NU.

Project:
Irish Water Network Management
Loughrea Cast Iron Batch 1 Co. Galway

Kelly's Street Street Closure and Diversion

Road Closure on Kelly's Street for access to Main Street Traffic will travel along Barrack Street and up Moore Street. The Road will be closed at Both Junctions and Access will be available for Locals and Residents



3-Way Traffic Lights or Stop/Go required for connections to existing Main

NOTES

1. All signs will comply with Traffic Sign Regulations.
2. All Traffic Management to be in accordance with Chapter 8.

FARRANS

UTILITIES

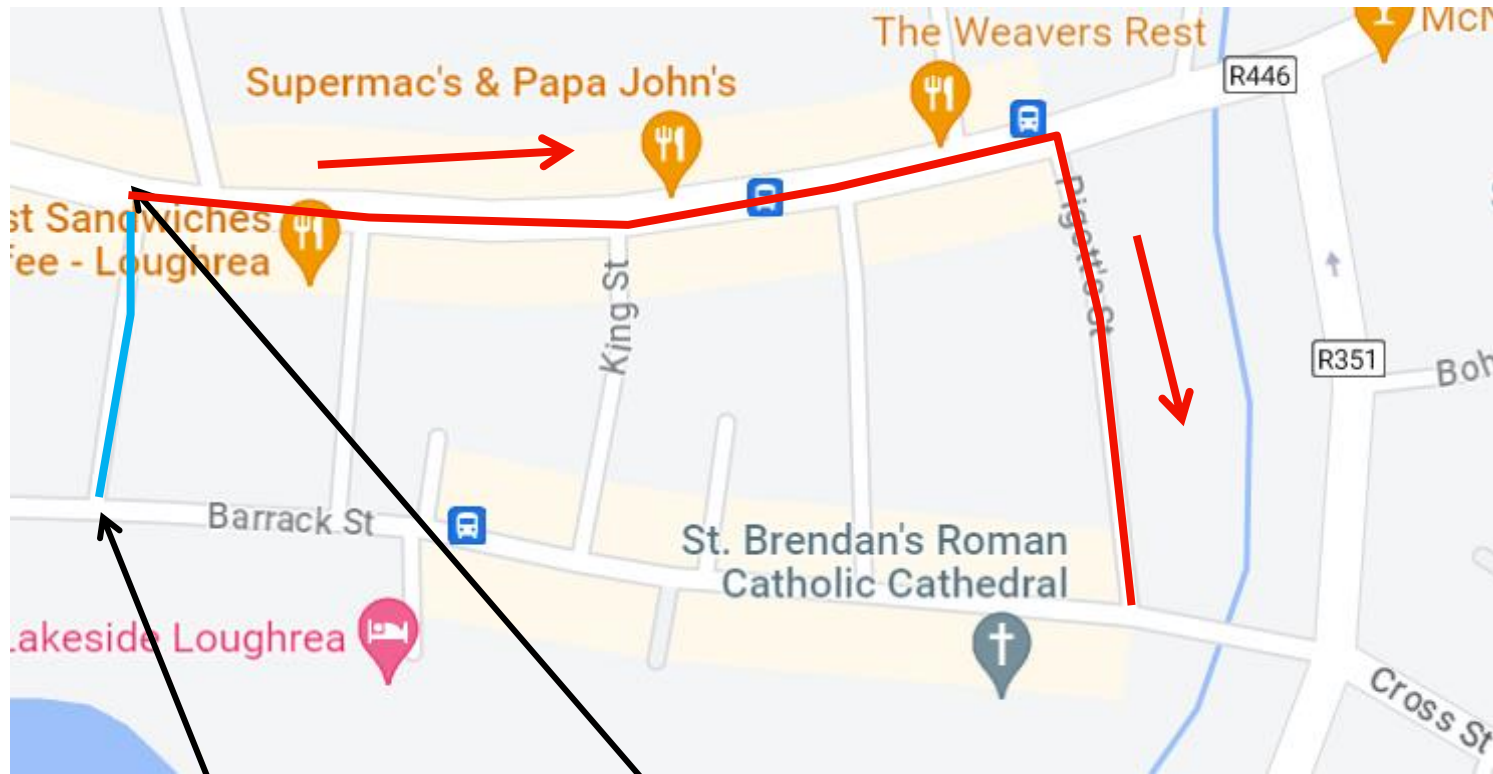
Farrans Construction Ltd
99 Kingsway,
Dunmurry,
BT17 9NU.

Project:

Irish Water Network
Management
**Loughrea Cast Iron
Batch 1 Co. Galway**

Castle Street Street Closure and Diversion

Road Closure on Castle Street Street for access to Barrack Street Traffic will travel along Main Street and down Piggott's Street. The Road will be closed at Both Junctions and Access will be available for Locals and Residents



3-Way Traffic Lights or Stop/Go required for connections to existing Main

NOTES

1. All signs will comply with Traffic Sign Regulations.
2. All Traffic Management to be in accordance with Chapter 8.

FARRANS

UTILITIES

Farrans Construction Ltd
99 Kingsway,
Dunmurry,
BT17 9NU.

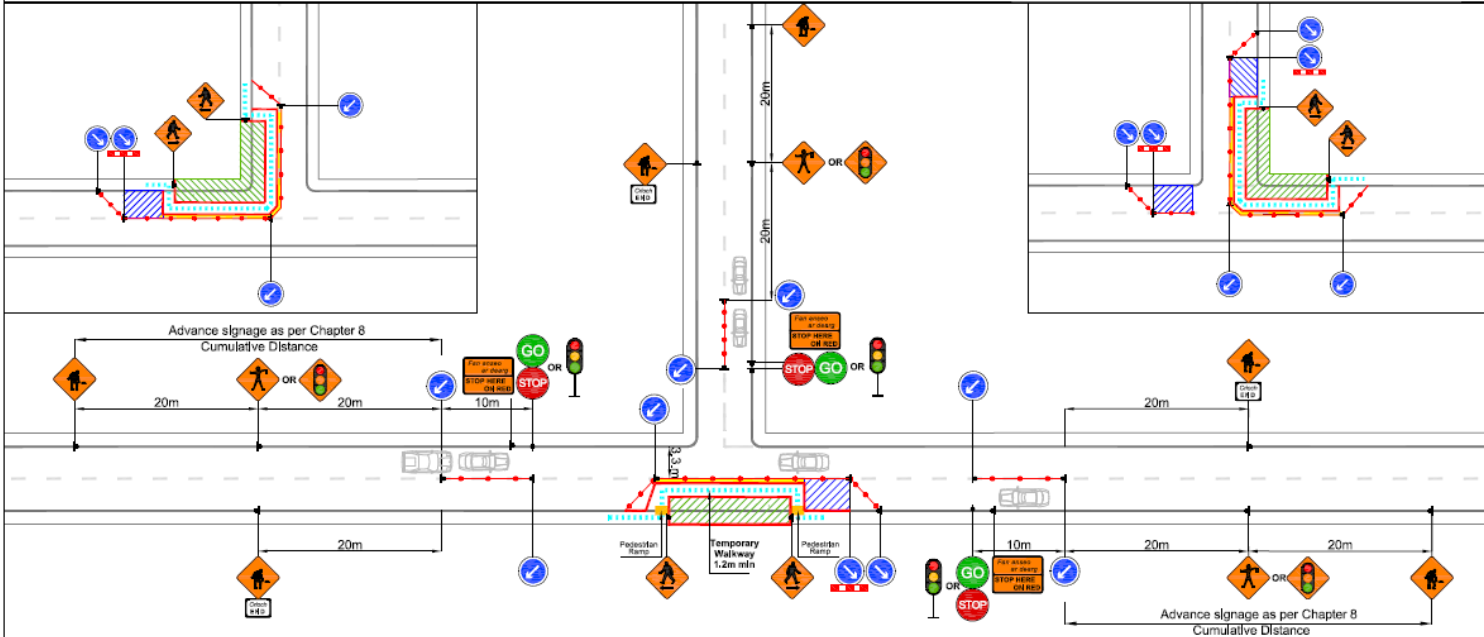
Project:

Irish Water Network
Management
**Loughrea Cast Iron
Batch 1 Co. Galway**

Loughrea Cast Iron, TM Set-ups

Traffic Management Plan for Level 1 - STATIC WORKS - Urban and Low Speed

Three Way Stop and Go / Temporary Traffic Signals Operation (Temporary Footway on Carrlageway)



LEGEND	Design Parameters Level 1 Typ A& B	1(i)	1(ii)	1(iii)	1(iv)	Note:
1. Sign Location	1. Speed of the Road (km/h):	30	40	50	60	1. All signs to comply with Chapter 8 of the "Traffic Signs Manual" - Guidance Document.
2. Lateral Safety Zone	2. Sign Size (mm):	450	450	600	600	2. All Traffic Management to be carried out in accordance with Chapter 8 of the "Traffic Signs Manual".
3. Approved Barrier System	3. Signs Visibility (m):	25	35	50	60	3. Detailed Risk Assessment to be carried out prior to the installation of Traffic Management System.
4. Traffic Cones	4. Number of Advance Signs (No):	2 (1)	2	2	3 (2)	4. The Contractor shall be responsible for providing all required ramp access to all changes in road surface level where traffic runs on a temporary surface and also for cycle/pedestrian ramps where footpath, cycle paths or any surface which has a level discontinuity as a result of the works.
5. Works Area Surrounded with Approved Barrier	5. Cumulative Distance (m):	20 (10)	30	40	60 (40)	5. Exact sign positions to be agreed on site.
6. Longitudinal Safety Zone	6. Dist. between Advance Signs (m):	1	15	20	20	6. All safety zones to be maintained at all times.
7. Longitudinal Safety Zone	7. Leading Taper:	1 in 1	1 in 1	1 in 5	1 in 10	7. All affected Parties and An Garda Stochana to be notified prior to works commencing.
8. Longitudinal Safety Zone	8. Longitudinal Safety Zone (m):	0.5	0.5	5	15	8. Signs to be positioned so as not to cause an obstruction to other road users.
9. Longitudinal Safety Zone	9. Lateral Safety Zone (m):	0.5	0.5	0.5	0.5	9. Minimum lane width of 3m to be maintained at all times.
10. Longitudinal Safety Zone	10. Taper Cone Spacing (m):	1	1	3	3	10. Minimum footpath width of 1.2 m to be maintained at all times.
11. Longitudinal Safety Zone	11. Longitudinal Cone Spacing (m):	3	3	3	6	11. All signs shall be as per table 8.2.2.2 - 8.2.2.5 of the "Traffic Signs Manual".
12. Longitudinal Safety Zone	12. Cone Height (mm):	750	750	750	750	12. Safety barrier to be in accordance with IS EN 1317.
13. Longitudinal Safety Zone	13. Lane Width (m):	2.5	3	3	3	13. "End of Roadworks" signs placed 20m to 50m from end of works area.
						14. All vehicles will be parked in accordance to law and will not obstruct any entrance or cause disruption to members of the public.

NOTES

1. All signs will comply with Traffic Sign Regulations.
2. All Traffic Management to be in accordance with Chapter 8.

FARRANS

UTILITIES

Farrans Construction Ltd

99 Kingsway,

Dunmurry,

BT17 9NU.

Project:

Irish Water Network Management

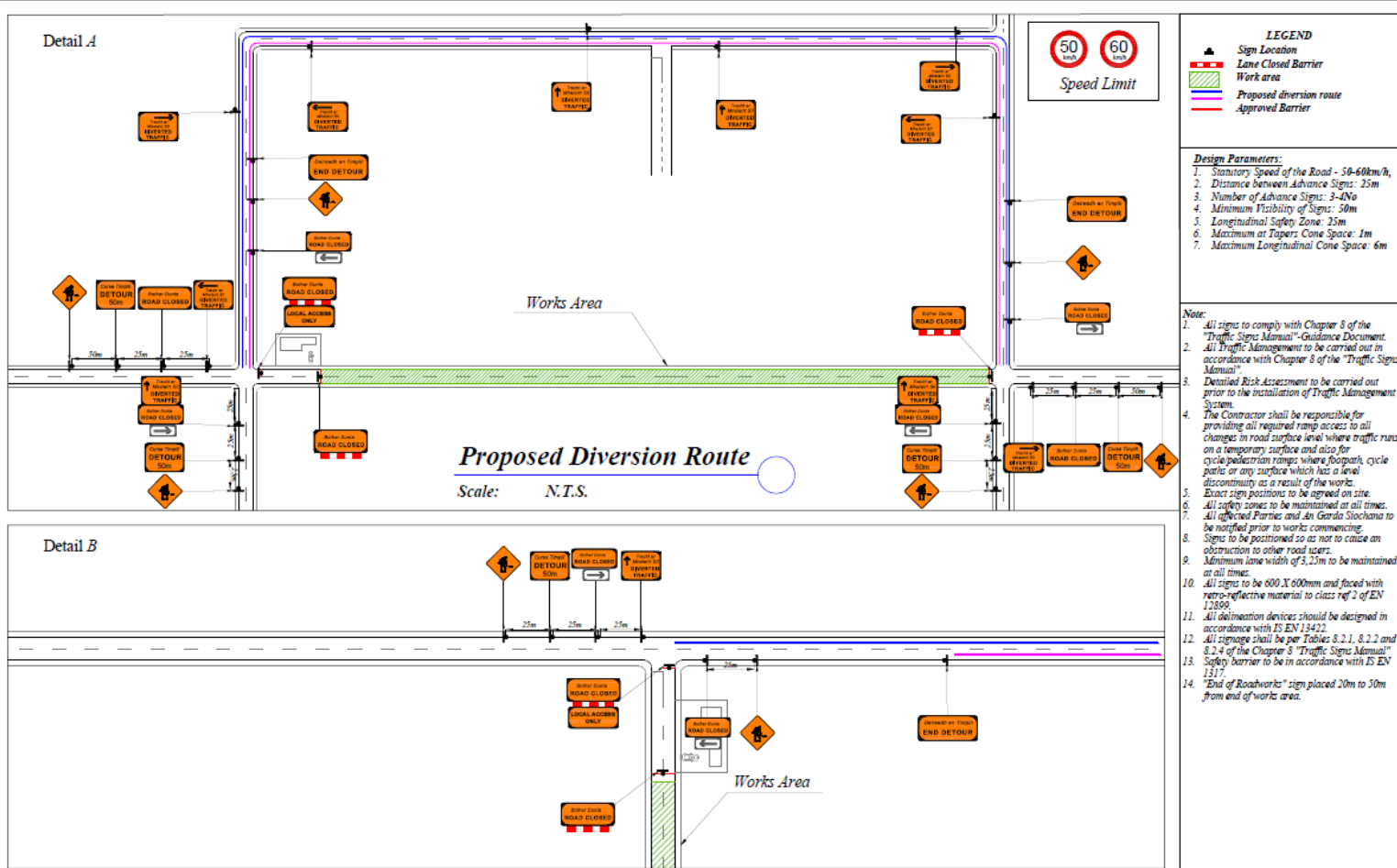
Loughrea Cast Iron Batch 1, Co. Galway



Rev:	Description:	Date:	Job Details:	Drawing:	Dwg no:
			Irish Water Network Management works at.....	Typical Traffic Management Detail for Three Way STOP & GO Traffic Signals Operation.	006
					Rev:
			Sheet:	CAD File ref.:	Scale:
				Drawn By: AK	As Shown
				Date: May 2022	

3-Way Traffic Lights or Stop/Go required for the Connection to the existing Main

Loughrea Cast Iron, TM Set-ups



NOTES

1. All signs will comply with Traffic Sign Regulations.
2. All Traffic Management to be in accordance with Chapter 8.

FARRANS

UTILITIES

Farrans Construction Ltd
99 Kingsway,
Dunmurry,
BT17 9NU.

Project:

Irish Water Network
Management

Loughrea Cast Iron
Batch 1, Co. Galway

FARRANS

Rev:	Description:	Date:	Job Details:	Drawing:	Dwg no:
			Proposed Traffic Management Plan for Proposed Road Closure	Typical Road Closure and Detour Details for Road Level 1 & 2 30km/h & 50km/h and 60km/h	02
			Sheet:	Drawn By: DM	Rev:
			CAD File ref.:	Date: September 2017	Scale: As Shown

Diversion Set-Ups for each Street